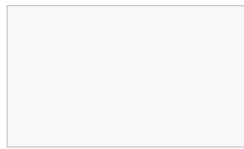
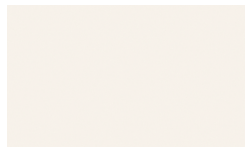


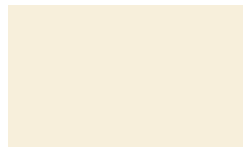
## High Pressure Laminate Color Selector



**949**  
White



**932**  
Antique White



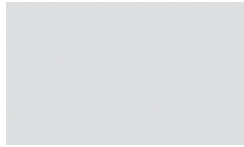
**920**  
Almond



**929**  
Oyster Gray



**7897**  
Spectrum Green



**927**  
Folkstone



**961**  
Fog



**899**  
Desert Beige



**7966**  
New Burgundy\*



**6901**  
Vibrant Green



**5875**  
Neutral Weft



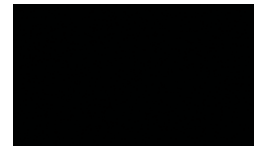
**6920**  
Mineral Spa



**914**  
Marine Blue\*



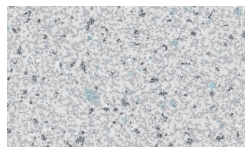
**969**  
Navy Blue\*



**909**  
Black\*



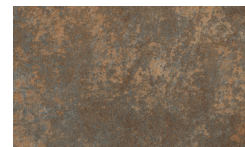
**507**  
Folkstone Grafix



**692**  
Folkstone Celesta



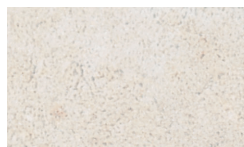
**503**  
Stone Grafix



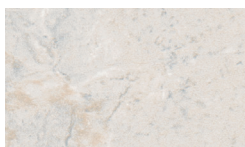
**3707**  
Patine Bronze



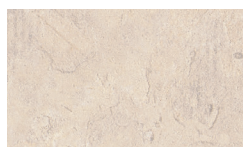
**515**  
Graphite Grafix



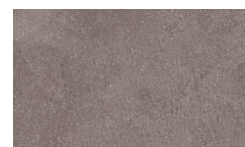
**7264**  
Lime Stone



**7735**  
Portico Marble



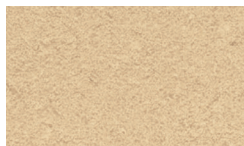
**7022**  
Natural Canvas



**7213**  
Earth Wash



**6220**  
Smoke Quarstone



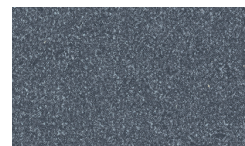
**7813**  
Cardboard Solidz



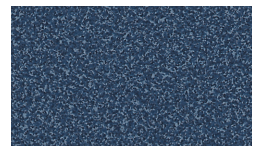
**9497**  
Silver Quartzite



**7812**  
MDF Solidz



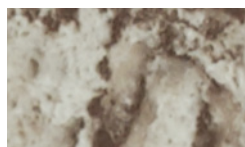
**3505**  
Storm Solidz



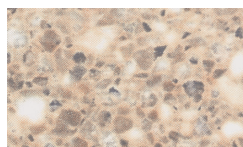
**7018**  
Navy Grafix



**3526**  
Travertine



**9309**  
Star Dune



**3517**  
Sand Crystall



**7739**  
Cocoa Maple



**7288**  
Ginger Root Maple



**7012**  
Amber Maple



**8849**  
Natural Teak



**8846**  
Oiled Legno

Samples shown are printed reproductions and slight variations may occur from the actual laminate. A large sample of the actual laminate should be viewed before ordering.

Standard Finish Identification: Matte (-58),  
Other popular Formica® finishes: Artisan™ (-43), MicroDot™ (-MC), Etchings™ (-46), Scovato™ (-34), Crystal (-42), Naturelle™ (-NT), Radiance® (-RD)  
and Natural Grain™ (-NG) are available with an additional upcharge.

Not all finishes are available on every color. See your local representative for complete list of finish options.

\*Peel coat required on this item with an additional upcharge.

Directional and woodgrain patterns may incur additional costs due to limited yield, please check with American Sanitary associate for final pricing.

# Plastic Laminate Partitions

**General:** Toilet compartments shall be Type PL-\_\_\_\_\_ (CS-Ceiling Stile; or FS-Floor Stile; or FF-Full Flush; or FC-Floor to Ceiling) as manufactured by American Sanitary Partition Corporation, Ocoee, FL, 34761.

**Materials:** Panels and doors shall be externally covered with high pressure decorative laminated plastic, all edges bound, the above bonded to industrial grade 45lb. particle board core (plywood core panels and doors available at additional cost).

Stiles shall be of veneer steel construction (similar to our Baked Enamel construction) laminated to a honeycomb core and externally covered with high-pressure decorative plastic. Construction consists of **NO PARTICLE BOARD.**

**Construction:** Stiles, panels and doors shall be laminated to a correct dimension producing a stile unit of not less than 1 1/4" thick and a panel and door unit of not less than 1" thick. Stiles, panels and door units shall be pre-pierced for application of fittings and hardware.

**Fittings:** All wall brackets shall be "Zamac" cast alloy non-ferrous metal. All brackets are chrome plated and adjustable to keep panels and stiles clear from walls. Stile cover bases shall be 3" high, of No. 304 stainless steel.

**Finish:** Color shall be one color or one combination of two colors selected from American Sanitary's standard color chart. Color charts available on request.

**Hardware:** Doors shall be equipped with "Trouble-Proof" hinge set or approved equal. Stainless steel hardware available on request.

# Phenolic Black Core and Color Through Partitions

**General:** Toilet compartments shall be Type PH-\_\_\_\_\_ (CS-Ceiling Stile; or FS-Floor Stile; or FF-Full Flush; or FC-Floor to Ceiling) as manufactured by American Sanitary Partition Corporation, Ocoee, FL, 34761.

**Materials:** Panels, doors and pilasters shall be made of multiples layers of phenolic resin impregnated kraft papers compressed under heat and pressure, the phenolic component is decoratively faced as an integral part of the core.

**Construction:** Stiles and doors shall be made of phenolic core to a correct dimension producing a stile unit of not less than 3/4" thick and door unit of not less than 3/4" thick. Panels shall be 1/2" thick units. Other thickness configurations are available for an additional cost.

**Fittings:** All fittings shall be stainless steel #4 finish and adjustable to keep stiles and panels clear from walls. Stilecover bases shall be 3 1/2" high, of No. 304 stainless steel.

**Hardware:** Doors shall be equipped with a vault ball bearing hinge set. Each hinge set shall consist of stainless steel #4 finish hinge brackets. Slide latch, combination bumper and keeper, and coat hooks shall be stainless steel #4 finish. All hardware except coat hooks shall be through bolted. One-way type theft-proof screws and fasteners shall be provided for all hardware. Lift-Free emergency access keepers are available. Institutional hardware available on request.

## AMERICAN SANITARY Partition Corporation

Since 1932, American Sanitary Partition Corporation is the accepted standard among many architects and contractors across the nation. Along with toilet compartments, we also produce complete lines of shower cabinets.

American Sanitary's partitions provide the comfort and convenience that are important with today's fast-paced lifestyle. With our many years of experience in the toilet partition industry, our products offer more advantages and beauty than any other materials used to date. Our design is developed from our metal partition line, incorporating all of the features required to produce a sound, rigid and lasting installation. The partitions are available in a wide variety of appealing colors and patterns, and will delight the architect and decorator with their beauty and durability. All models are available in powder coated baked enamel finish on galvanized bonderized steel, stainless steel, high pressure decorative laminated plastic, and phenolic core.

**300 Enterprise Street  
P.O. Box 99**

**Ocoee, FL 34761**

**Phone: 407-656-0611**

**Fax: 407-656-8189**

**www.am-sanitary-partition.com**

**amersan@aol.com**

SEE US IN



DIRECTORY

CATALOG  
FILES

CD

SWEETS.COM



To learn more about the complete line of Formica® brand products, programs, promotions and/or to order samples, visit [www.formica.com](http://www.formica.com) or call 1-800-FORMICA™.

Formica®, the Formica® Anvil logo and Radiance® are registered trademarks of The Diller Corporation. Artisan™, MicroDot™, Etchings™, and Naturelle™ are trademarks of The Diller Corporation.



U.S. Green Building Council Formica Corporation is a member of the U.S. Green Building Council.



Greenguard Environmental Institute Formica® high pressure laminate (HPL) is GreenGuard Indoor Air Quality Certified under the GreenGuard Standard for Low-Emitting Products.

